



EQUIPMENT NEEDED

To take a tissue sample using the Allflex Tissue Sampling Unit (TSU), the following tools are needed:

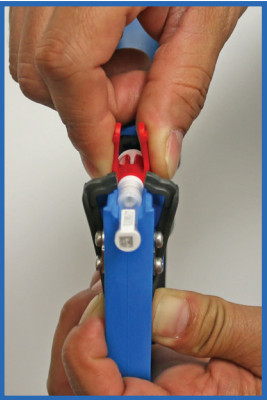
1. An Allflex tissue applicator
2. Allflex tissue units
 - Animals should be restrained during sampling (For example, by using a head gate).

TSU's should be stored at room temperature prior to use out of direct sunlight. Care should be taken not to expose the unused product to extremes of heat or cold prior to sampling.

HOW TO USE THE ALLFLEX TISSUE APPLICATOR

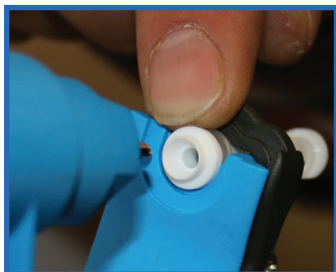
A. LOADING THE ALLFLEX TISSUE APPLICATOR

- ① Remove a TSU unit from the packaging. TSU's should be assembled as one piece: if they have come apart, reassemble.
- ② Ensure the tube retainer at the base of the applicator gun is open. Push the retainer clips to open.
- ③ Insert the TSU into the tissue applicator as shown below. Release clips to lock TSU into the device.
- ④ Squeeze the applicator handles together, guiding the TSU tip into place if necessary. You will feel a "Locking" action once properly placed. When fully seated the gun bolt will rest flush against the white metal cutter.
- ⑤ Release the handle and remove the red plastic clip by pulling it outward. **TAKE CARE NOT TO CUT FINGER ON THE METAL CUTTER-IT IS VERY SHARP.**
- ⑥ The applicator is now loaded and ready to take a sample. All parts are for one use only; do not re-use metal cutters.

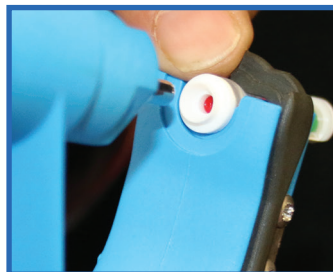


B. TAKING THE SAMPLE

- ① Ensure the tissue applicator is loaded with an unused tissue punch (the red plunger is visible in used punches).

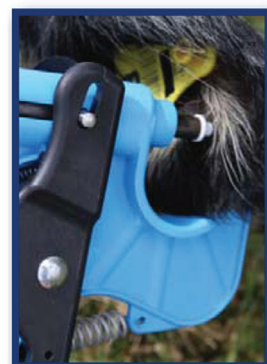
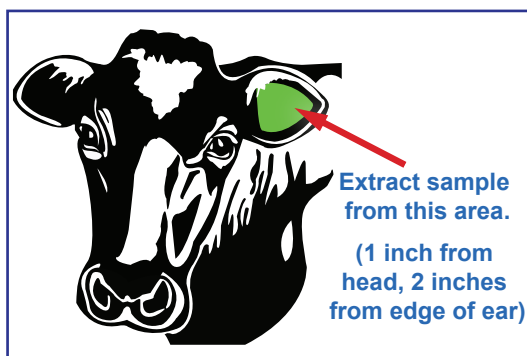
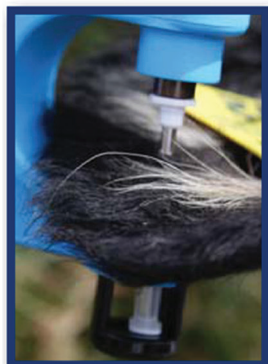


Un-used punch



Used punch

- ② Slide the gun over the ear, and position the cutter approximately 1 inch from the edge of the ear, taking care to avoid any obvious veins and ridges.

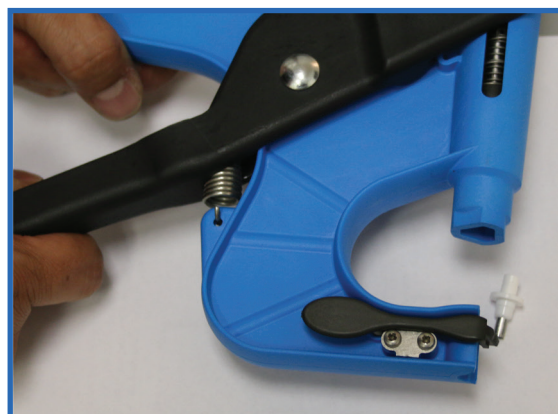


- ③ Squeeze handles together to take a sample and then release to free the ear. Try to do this in one swift, fluid, motion. Move with the animal and don't fight its movements.

- ④ Remove the punch from the device and check that sampling has been successful. If not, discard the sample and re-sample with a new punch.



- ⑤ Remove the used cutter from the applicator by pulling the handles apart. This will loosen the cutter. Discard safely. CAUTION: THE CUTTER IS VERY SHARP.



Once the tissue sample has been successfully extracted, care should be taken to store the sample at room temperature and away from sunlight for up to a year. We recommend freezing the sample after a year, for long term storage.

ALLFLEX USA, INC.
2805 E. 14th Street
Dallas Ft. Worth Airport, Texas 75261-2266
(800)989-TAGS (8247)



ALLFLEX CANADA
4135 Berard
St-Hyacinthe, Québec J2S 8Z8
(866)505-TAGS (8247)