

IDENTIFICATION BROCHURE



leaderproducts.com

Leaders in the field
since 1948

CONTENTS

	VISUAL CATTLE IDENTIFICATION TWO PIECE RANGE	3-5
	VISUAL CATTLE IDENTIFICATION ONE PIECE RANGE	6-7
	VISUAL CATTLE IDENTIFICATION FEEDLOT RANGE	8
	ACCESSORIES	9
	LASER MARKING - CATTLE	10
	CATTLE IDENTIFICATION APPLICATORS	11

HOW TO ORDER

STOCK CODES - HOW TO ORDER

Where specific colours are required for an ID Product you will need to apply the following Final Order Code method.

VISUAL CATTLE IDENTIFICATION - TWO PIECE RANGE



SUPER MAXI FEMALE

Marking Options: Laser or

Dimensions: 75.30 (w) x 119.10 (h) mm

Weight: 12.20 grams

GREY	BROWN	PURPLE	GREEN	PINK	ORANGE	YELLOW	WHITE	BLACK	RED	BLUE
1	2	3	4	5	6	7	8	9	10	11

Note: Price does not include Male Button

2PSM

A

B

Note: Excludes Male Tag and Marking (to match the pricebook)

A + B = FINAL ORDER CODE

2PSM + 6 = **2PSM6**

VISUAL CATTLE IDENTIFICATION TWO PIECE RANGE



SUPER MAXI FEMALE

2PSM

The Super Maxi Female is a two piece tag designed for ease of application and the toughest conditions. They are available in 11 bright colors and designed to withstand the harshest of UV conditions to ensure sustainability and avoid fading.

It is the largest two piece tag in the Leader range, providing a large surface area for marking, giving excellent readability from long distances.

The Super Maxi Female tags are applied using the Applicator Two Piece Tags.

GREY	BROWN	PURPLE	GREEN	PINK	ORANGE	YELLOW	WHITE	BLACK	RED	BLUE
1	2	3	4	5	6	7	8	9	10	11

Marking Options: Laser

Dimensions: 75.30 (w) x 119.60 (h) mm

Weight: 12.20 grams

Note: Excludes Male Tag and Marking



MAXI FEMALE

2PMX

The Maxi Female is a two piece tag designed for ease of application and the toughest conditions. They are available in 11 bright colors and designed to withstand the harshest of UV conditions to ensure sustainability and avoid fading.

The Maxi Female has a shorter neck than the Super Maxi Female, making it a popular tag for stud cattle and dairy applications, providing a large surface area for marking, and giving excellent readability from long distances.

Maxi Female tags are applied using the Applicator Two Piece Tags.

GREY	BROWN	PURPLE	GREEN	PINK	ORANGE	YELLOW	WHITE	BLACK	RED	BLUE
1	2	3	4	5	6	7	8	9	10	11

Marking Options: Laser

Dimensions: 74.00 (w) x 101.30 (h) mm

Weight: 11.90 grams

Note: Excludes Male Tag and Marking

VISUAL CATTLE IDENTIFICATION TWO PIECE RANGE



LARGE FEMALE

2PL

The Large Female is a two piece tag, designed for ease of application and the toughest conditions. They are available in 11 bright colors and designed to withstand the harshest of UV conditions to ensure sustainability and avoid fading.

Large Female tags are applied using the Applicator Two Piece Tags.

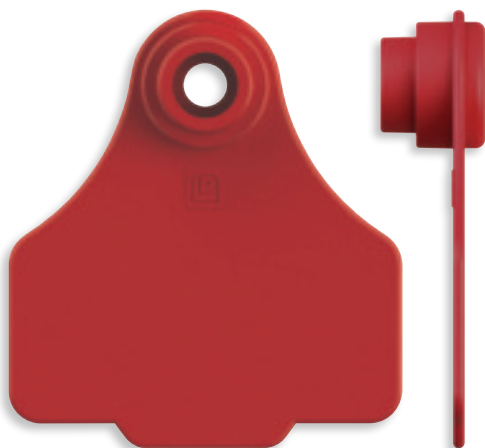
GREY	BROWN	PURPLE	GREEN	PINK	ORANGE	YELLOW	WHITE	BLACK	RED	BLUE
1	2	3	4	5	6	7	8	9	10	11

Marking Options: Laser

Dimensions: 58.20 (w) x 72.50 (h) mm

Weight: 6.90 grams

Note: Excludes Male Tag and Marking



SMALL FEMALE

2PS

The Small Female is a two piece tag, designed for ease of application and the toughest conditions. They are available in 11 bright colors and designed to withstand the harshest of UV conditions to ensure sustainability and avoid fading.

Small Female tags are applied using the Applicator Two Piece Tags.

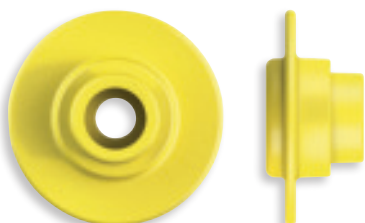
GREY	BROWN	PURPLE	GREEN	PINK	ORANGE	YELLOW	WHITE	BLACK	RED	BLUE
1	2	3	4	5	6	7	8	9	10	11

Marking Options: Laser

Dimensions: 47.80 (w) x 53.20 (h) mm

Weight: 4.77 grams

Note: Excludes Male Tag and Marking



BUTTON FEMALE

FB

The Button Female is a two piece tag, designed for ease of application and the toughest conditions. They are available in 11 bright colors and designed to withstand the harshest of UV conditions to ensure sustainability and avoid fading.

Button Female tags are applied using the Applicator Two Piece Tags.

GREY	BROWN	PURPLE	GREEN	PINK	ORANGE	YELLOW	WHITE	BLACK	RED	BLUE
1	2	3	4	5	6	7	8	9	10	11

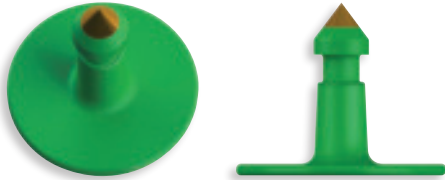
Marking Options: Laser

Dimensions: 28.00 dia. x 12.80 (h) mm

Weight: 2.60 grams

Note: Excludes Male Tag and Marking

VISUAL CATTLE IDENTIFICATION TWO PIECE RANGE



BUTTON MALE

MB

The Button Male is a two piece tag, designed for ease of application and the toughest conditions. They are available in 11 bright colors and designed to withstand the harshest of UV conditions to ensure sustainability and avoid fading.

Button Male tags are applied using the Applicator Two Piece Tags.

GREY	BROWN	PURPLE	GREEN	PINK	ORANGE	YELLOW	WHITE	BLACK	RED	BLUE
1	2	3	4	5	6	7	8	9	10	11

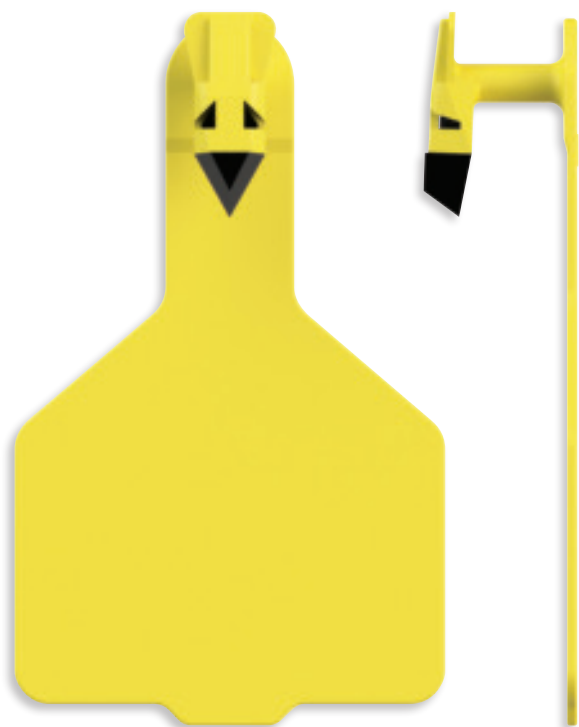
Marking Options: Laser

Dimensions: 28.00 dia. x 23.10 (h) mm

Weight: 2.11 grams

Note: Excludes Female Tag and Marking

VISUAL CATTLE IDENTIFICATION ONE PIECE RANGE



CALF TAG

CAT

The Calf Tag is a self piercing one piece tag designed for ease of application. They are available in 11 bright colors and designed to withstand the harshest of UV conditions to ensure sustainability and avoid fading.

Calf Tags are applied using the Applicator One Piece.

GREY	BROWN	PURPLE	GREEN	PINK	ORANGE	YELLOW	WHITE	BLACK	RED	BLUE
1	2	3	4	5	6	7	8	9	10	11

Marking Options: Laser

Dimensions: 61.00 (w) x 100.00 (h) mm

Weight: 8.28 grams

Note: Self Piercing. Excludes Marking



COW TAG

CT

The Cow Tag is a self piercing one piece tag designed for ease of application. They are available in 11 bright colors and designed to withstand the harshest of UV conditions to ensure sustainability and avoid fading.

Cow Tags are applied using the Applicator One Piece.

GREY	BROWN	PURPLE	GREEN	PINK	ORANGE	YELLOW	WHITE	BLACK	RED	BLUE
1	2	3	4	5	6	7	8	9	10	11

Marking Options: Laser

Dimensions: 75.50 (w) x 114.00 (h) mm

Weight: 10.81 grams

Note: Self Piercing. Excludes Marking.

VISUAL CATTLE IDENTIFICATION ONE PIECE RANGE



COW TAG WIDE NECK

CTW

The Cow Tag is a self piercing one piece tag designed for ease of application. They are available in 11 bright colors and designed to withstand the harshest of UV conditions to ensure sustainability and avoid fading.

Cow Tags are applied using the Applicator One Piece.

GREY	BROWN	PURPLE	GREEN	PINK	ORANGE	YELLOW	WHITE	BLACK	RED	BLUE
1	2	3	4	5	6	7	8	9	10	11

Marking Options: Laser

Dimensions: 75.50 (w) x 114.00 (h) mm

Weight: 10.81 grams

Note: Self Piercing. Excludes Marking

VISUAL CATTLE IDENTIFICATION FEEDLOT RANGE



FEEDLOT TAG ONE PIECE

FTO

The Feedlot Tag One Piece is a self piercing tag designed for ease of application. They are available in 11 bright colors and designed to withstand the harshest of UV conditions to ensure sustainability and avoid fading. Designed to provide short term identification for feedlots.

Feedlot Tag One Piece are applied using the Applicator One Piece.

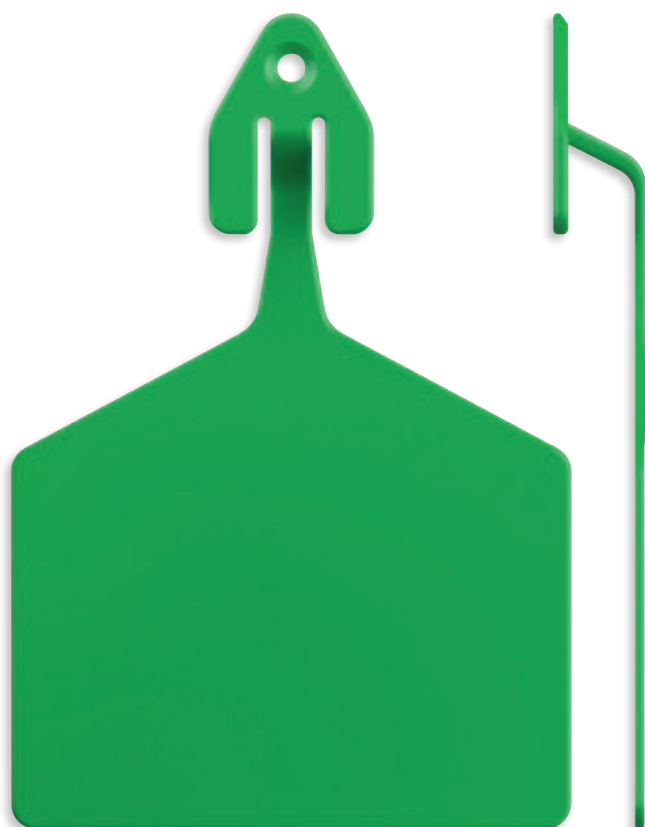
GREY	BROWN	PURPLE	GREEN	PINK	ORANGE	YELLOW	WHITE	BLACK	RED	BLUE
1	2	3	4	5	6	7	8	9	10	11

Marking Options: Laser

Dimensions: 76.00 (w) x 116.50 (h) mm

Weight: 9.91 grams

Note: Minimum Order 100. Excludes Marking



FEEDLOT TAG

FT

The Feedlot Tag is a one piece tag designed for ease of application and the toughest conditions. They are available in 11 bright colors and designed to withstand the harshest of UV conditions to ensure sustainability and avoid fading.

Feedlot Tags are applied using the Applicator Feedlot.

GREY	BROWN	PURPLE	GREEN	PINK	ORANGE	YELLOW	WHITE	BLACK	RED	BLUE
1	2	3	4	5	6	7	8	9	10	11

Marking Options: Laser

Dimensions: 75.80 (w) x 110.37 (h) mm

Weight: 7.02 grams

Note: Minimum Order 100. Excludes Marking

ACCESSORIES



MARKING PEN (TAG) BLACK

MPEN1000

The Marking Pen has a broad tip and is quick-drying to assist in ensuring you get a good mark on your tags. Designed specifically to suit all weather conditions.

Available in black ink.

Weight: 25.00 grams

Applicable Tags: One Piece, Two Piece



MARKING PEN (TAG) WHITE

MPEN1001

The Marking Pen has a broad tip and is quick-drying to assist in ensuring you get a good mark on your tags. Designed specifically to suit all weather conditions.

Available in white ink.

Weight: 35.00 grams

Applicable Tags: One Piece, Two Piece



KEYRING

KEY1000

The Marking Pen has a broad tip and is quick-drying to assist in ensuring you get a good mark on your tags. Designed specifically to suit all weather conditions.

Available in white ink.

Weight: 35.00 grams

Applicable Tags: One Piece, Two Piece

LASER MARKING - CATTLE



1 LINE LASER MARKING

1L

The Leader laser marking system makes for permanent marking with the laser penetrating the tag and becoming part of the tag. Laser marking enables more flexibility in marking options.

Marking Options:

One line of characters, number of characters varies due to the tag and print size.



2 LINE LASER MARKING

2L

The Leader laser marking system makes for permanent marking with the laser penetrating the tag and becoming part of the tag. Laser marking enables more flexibility in marking options.

Marking Options:

Two lines of characters, number of characters varies due to the tag and print size.



3 LINE LASER MARKING

3L

The Leader laser marking system makes for permanent marking with the laser penetrating the tag and becoming part of the tag. Laser marking enables more flexibility in marking options.

Marking Options:

Three lines of characters, number of characters varies due to the tag and print size.



CUSTOMISED LASER MARKING

CL

The Leader laser marking system makes for permanent marking, with the laser penetrating and becoming part of the tag. Laser marking enables more flexibility in marking options.

Customized laser tags may be ordered with a virtually unlimited number of marking options, including logos, brands, numbers and bar codes.

Marking Options: Brands, Logos, Bar Codes

Format Required: .eps or vector

Note: Customised Laser Marking price is per tag. Customised Laser Set-Up price is per template

CATTLE IDENTIFICATION APPLICATORS



APPLICATOR TWO PIECE TAGS

APPTP

The Applicator Two Piece Tags is made from solid diecast material and MIM technology for the insertion pin to ensure against breakage or bending. Designed specifically for all weather conditions.

Applicable Tags: Official EID, Official Flag EID, Enviro, Leadertronic and Visual Two Piece Tag Range.

Weight: 380.00 grams



APPLICATOR ONE PIECE TAG

APP ONE P

The Applicator One Piece is made from super lightweight plastic with a hardened steel pin to ensure against breakage or bending. Designed specifically for all weather conditions.

Applicable Tags: One Piece Tag Range

Weight: 170.00 grams



APPLICATOR FEEDLOT

FTAPP

The Applicator Feedlot is designed from engineering grade plastic and MIM technology for the insertion pin to ensure the longevity and sharpness at all times. Designed specifically for all weather conditions in the feedlot environment.

Applicable Tags: Feedlot Tag FT Range Only

Weight: 420.00 grams

Distributed By:



worldwideplanet
bringing technology to industries

Leader Products Ltd.

3801 9 Avenue North,
Lethbridge, AB T1H 6G8,
Canada

P 1 833 549 1563

E orders.ca@worldwideplanet.com

W www.leaderproducts.com

CONTACT YOUR REPRESENTATIVE BELOW:



leaderproducts.com